



KONTEC KSC3-K

Extremely compact single-acting clamping vise for precise machining of the sixth side

Compact single-acting vise with high clamping forces at maximum precision with nickel-plated base body

With the new SCHUNK KONTEC KSC3-K single-acting clamping vise, the successful KSC3 series of centric clamping vises gets another elementary component. The base body of the KSC3-K vises has now been extended to include a transverse groove for the fixed jaw. This means that precise second-side machining is now also possible. Especially in multiple applications, such as on tombstones, synergies can be achieved with centric and single-acting clamping vises, and processes can be significantly accelerated.

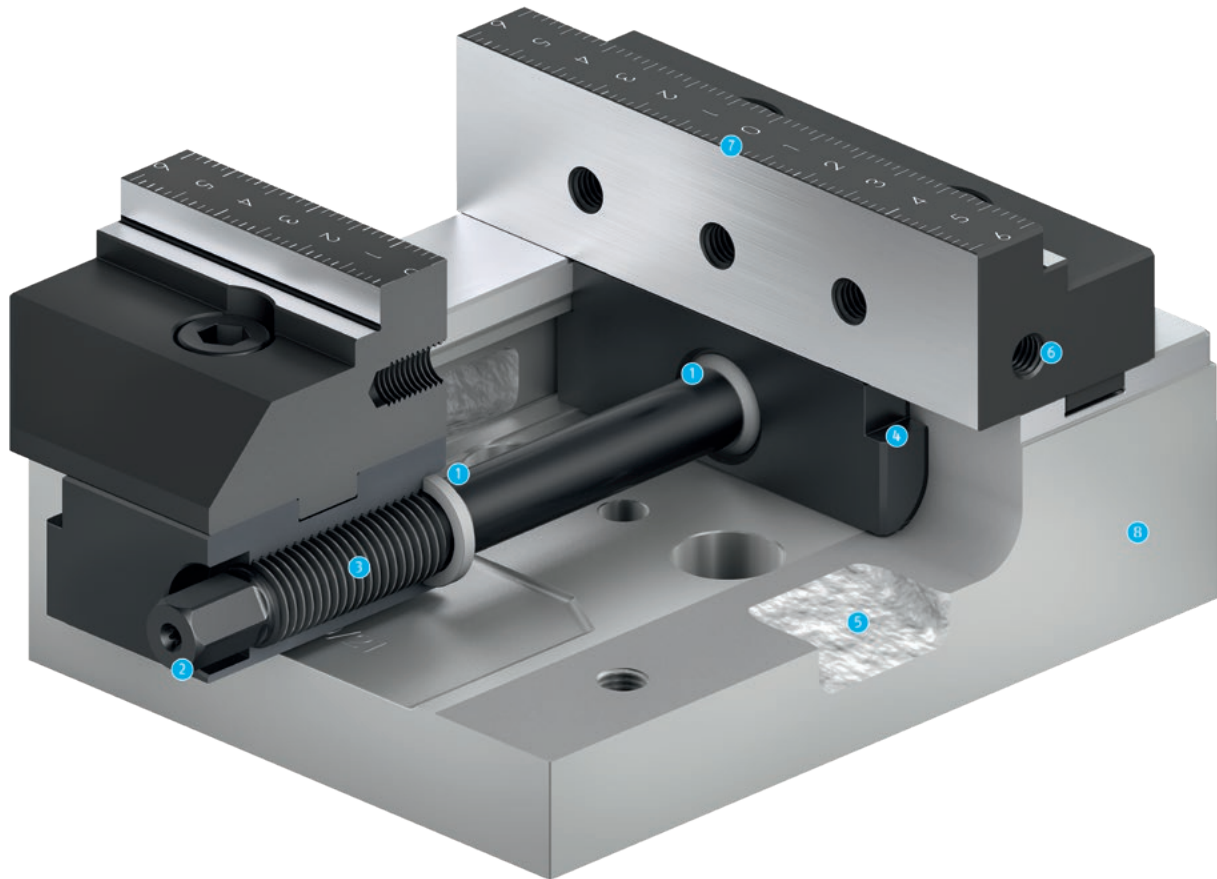


Advantages – Your benefits

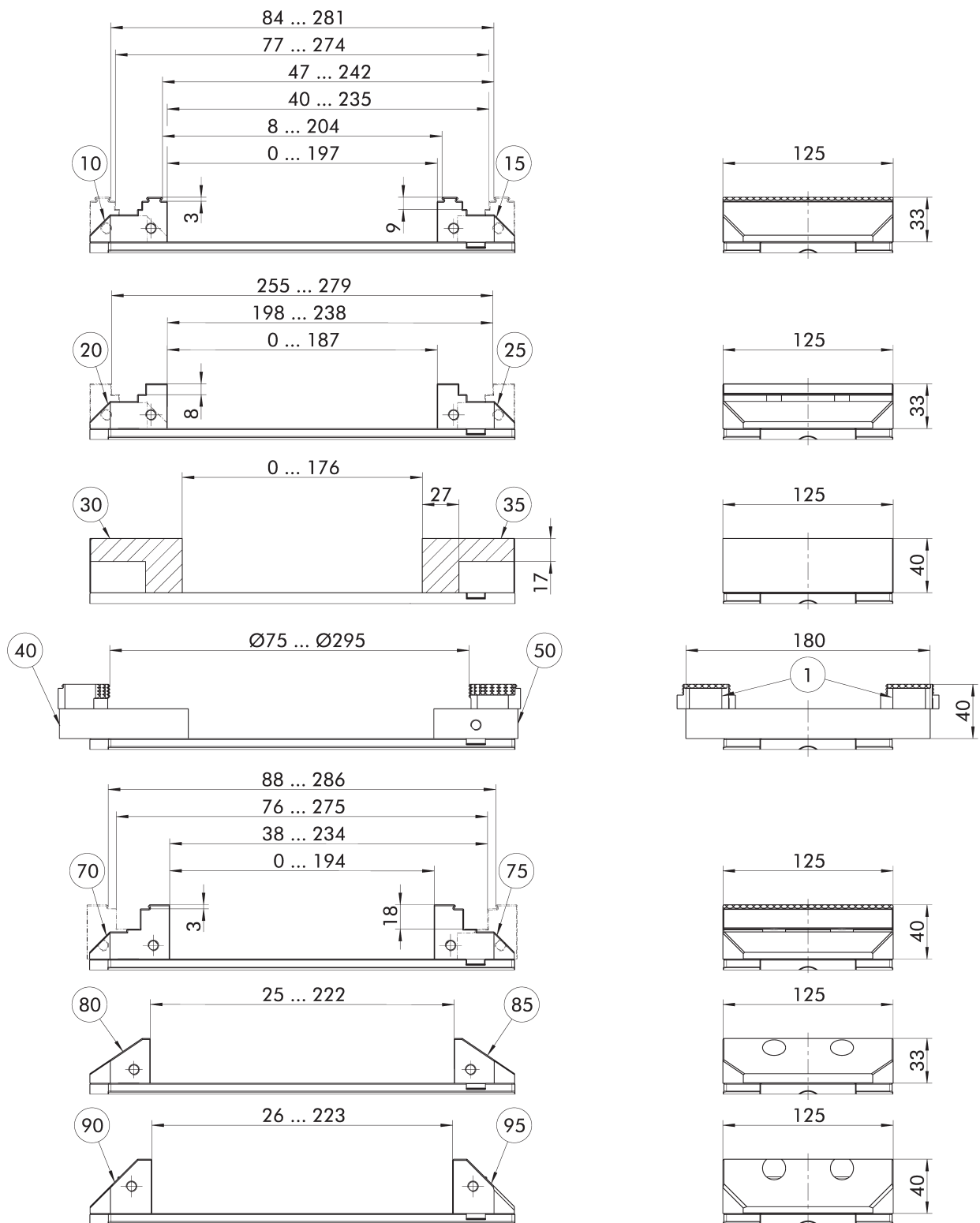
- + Nickel-plated base body**
For optimal corrosion protection and an even wider range of applications
- + Extremely flat design**
For maximum utilization of the machine room
- + High clamping forces**
Ensure process reliability during machining
- + Large clamping range**
High level of flexibility
- + Lateral drainage slots**
For drainage of coolant and chips
- + Optimum jaw support for O.D. and I.D. clamping due to a very long base jaw guidance**
Allows high clamping forces at a long service life
- + Jaw change with just two screws**
For quick and easy jaw change
- + Integrated NSE3, GFD and GFD mini interface**
Minimization of set-up times. Can be flexibly combined with the large modular quick-change pallet system

Function KSC3-K

SCHUNK KONTEC KSC3-K single-acting clamping vises are manual direct clamping vises. The drive takes place via a spindle. The force builds up directly without a force amplifier and is linear. The movable jaw is moved by turning the spindle in direction of the fixed jaw. The clamping force depends on the torque. The clamping range depends on the used jaw range.



- 1 Encapsulated system**
Offers optimal protection against coolant and chips
- 2 Recessed hexagonal connection**
Reduces the interfering contour
- 3 Spindle drive**
For the highest of clamping forces
- 4 Long slide**
Offers optimal support for O.D.- and I.D. clamping
- 5 Drainage slots**
For coolant and chips
- 6 Mounting thread**
For workpiece stops
- 7 System jaws and top jaws**
World's largest selection
- 8 Low height design**
Expands your machine's workspace



Suitable system jaws with position number on the next page.
Subject to technical changes.

- ① 6-way reversal grip jaw (ID 0430803), 6-way reversal carbide grip jaw (ID 1395550)

Technical data

Description	ID	Vise included	Width of the clamping vise [mm]	Max. clamping force [kN]	Max. torque [Nm]	Weight [kg]
KSC3-K 125-300	1514291		125	35	100	11.8
KSC3-K precise 125-300	1577208	Reversible smooth jaw	125	35	100	14.1

Scope of delivery

Vise, operating manual; without system jaws

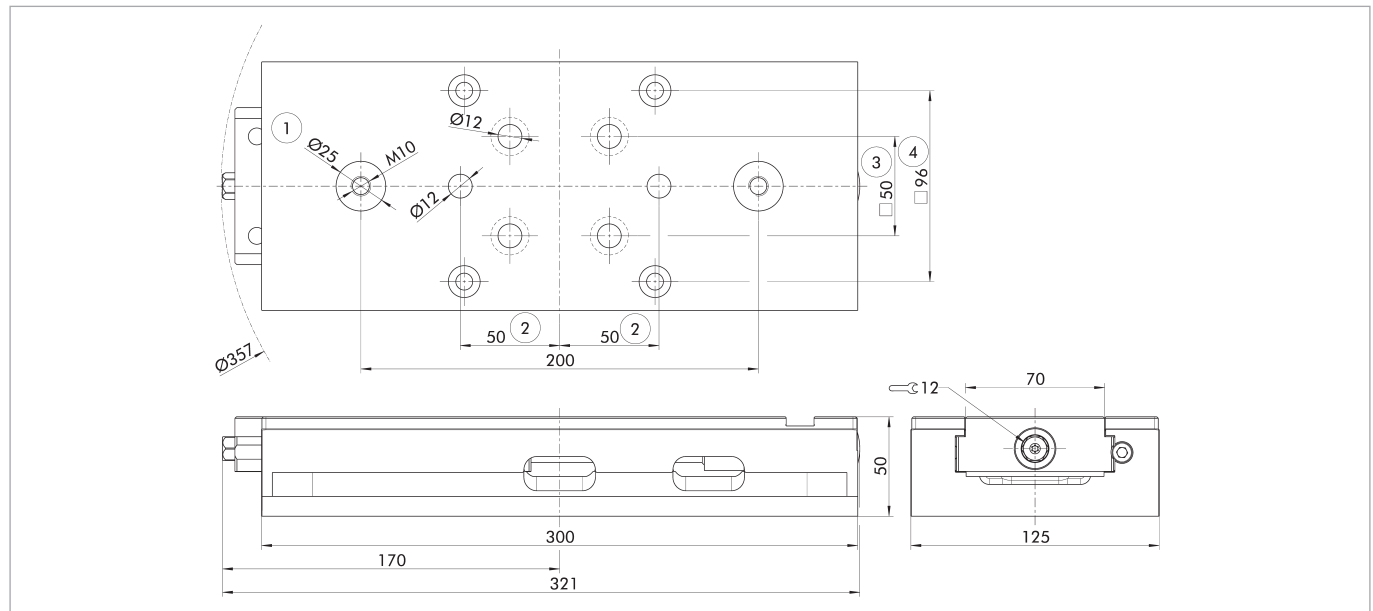
Note

System jaws

Depending on the version, the clamping device must be assembled separately with the system jaws or is already equipped with them (precise version).

Suitable system jaws

Description	Pos.	Description	ID	Width [mm]	Depth [mm]	Height [mm]	Weight [kg]
Reversible grip jaw	10	SGWB-G3-B 125-57-33	0432474	125	57	33	1.3
Reversible grip jaw	15	SGWB-G3-F 125-57-33	1359848	125	57	33	1.3
Reversible smooth jaw	20	SGWB-S8-B 125-57-33	1518691	125	57	33	1.3
Reversible smooth jaw	25	SGWB-S8-F 125-57-33	1518692	125	57	33	1.3
Aluminum jaw	30	SGAL-B 125-68-40	0432469	125	68	40	1
Aluminum jaw	35	SGAL-F 125-68-40	0432492	125	68	40	1.1
Swivel plate	40	SGP-3 180-95-22	0432470	180	95	22	2.8
Adapter plate	50	SGA-4 180-62-22	0432493	180	62	22	1.9
Reversible jaw	70	SGWB-G3-B 125-59-40	0430387	125	59	40	1.7
Reversible jaw	75	SGWB-G3-F 125-59-40	1586742	125	59	40	1.7
5-axis jaw	80	SG5A-B 125-44.5-33	1374778	125	44.5	33	0.9
5-axis jaw	85	SG5A-F 125-44.5-33	1374779	125	44.5	33	0.9
5-axis jaw	90	SG5A-B 125-45.5-40	0432472	125	45.5	40	1.1
5-axis jaw	95	SG5A-F 125-45.5-40	1551488	125	45.5	40	1.1



- ① Prepared for NSE3 and GFD clamping pins
- ② Prepared for alignment pins \varnothing 12m6

- ③ Prepared for M12 screws
- ④ Prepared for GFD-SP mini clamping pin \varnothing 20 h6

System jaws

Reversible grip jaw

Design as movable jaw.
With grip step 3 mm (up to 22 HRC) and a smooth clamping surface on both sides.



Suitable for	Description	Interface	ID
KSC3-K 125-300	SGWB-G3-B 125-57-33		0432474

Reversible grip jaw

Design as fixed jaw.
With grip step 3 mm (up to 22 HRC) and a smooth clamping surface on both sides.



Suitable for	Description	Interface	ID
KSC3-K 125-300	SGWB-G3-F 125-57-33		1359848

Reversible carbide-grip jaw

Design as movable jaw.
With carbide-grip step 3 mm (up to 58 HRC) and smooth clamping face on both sides.



Suitable for	Description	Interface	ID
KSC3-K 125-300	SGWB-CG3-B 125-57-33		1514374

Reversible carbide-grip jaw

Design as fixed jaw.
With carbide-grip step 3 mm (up to 58 HRC) and smooth clamping face on both sides.



Suitable for	Description	Interface	ID
KSC3-K 125-300	SGWB-CG3-F 125-57-33		1590610

Reversible jaw with embossed profile

Design as movable jaw.
With a special grip step on both sides for clamping pre-embossed workpieces simply and securely.



Suitable for	Description	Interface	ID
KSC3-K 125-300	SGWB-GL-B 125-57-33		1514378

Reversible jaw with embossed profile

Design as fixed jaw.
With a special grip step on both sides for clamping pre-embossed workpieces simply and securely.



Suitable for	Description	Interface	ID
KSC3-K 125-300	SGWB-GL-F 125-57-33		1627092

Reversible jaw

Design as movable jaw.
One side with grip step 3 mm (up to 22 HRC), one side height 40 mm with smooth clamping surface and threads for mounting top jaws.



Suitable for	Description	Interface	ID
KSC3-K 125-300	SGWB-G3-B 125-59-40	W-125-1	0430387

Reversible jaw

Design as fixed jaw.
One side with grip step 3 mm (up to 22 HRC), one side height 40 mm with smooth clamping surface and threads for mounting top jaws.



Suitable for	Description	Interface	ID
KSC3-K 125-300	SGWB-G3-F 125-59-40	W-125-1	1586742

Reversible grip jaw

Design as movable jaw.
Reduced jaw width.
With grip step 3 mm (up to 22 HRC) and a smooth clamping surface on both sides.



Suitable for	Description	Interface	ID
KSC3-K 125-300	SGWB-G3-B 65-57-33		1514380

Reversible grip jaw

Design as fixed jaw.
Reduced jaw width.
With grip step 3 mm (up to 22 HRC) and a smooth clamping surface on both sides.



Suitable for	Description	Interface	ID
KSC3-K 125-300	SGWB-G3-F 65-57-30		1587366

Aluminum jaw

Design as movable jaw.
Used for rework at the customer site e.g. for incorporating contours or special shapes.



Suitable for	Description	Interface	ID
KSC3-K 125-300	SGAL-B 125-68-40		0432469

Aluminum jaw

Design as fixed jaw.
Used for rework at the customer site e.g. for incorporating contours or special shapes.



Suitable for	Description	Interface	ID
KSC3-K 125-300	SGAL-F 125-68-40		0432492

Steel jaw

Design as movable jaw.
Used for rework at the customer site e.g. for incorporating contours or special shapes.



Suitable for	Description	Interface	ID
KSC3-K 125-300	SGS-B 125-68-40		1452569

Steel jaw

Design as fixed jaw.
Used for rework at the customer site e.g. for incorporating contours or special shapes.



Suitable for	Description	Interface	ID
KSC3-K 125-300	SGS-F 125-68-40		1559434

Swivel plate

Used – in combination with adapter plates and 6-way reversal jaws – to clamp bulky workpieces.



Suitable for	Description	Interface	ID
KSC3-K 125-300	SGP-3 180-95-22	W-38	0432470

Adapter plate

Used – in combination with swivel plates and 6-way reversal jaws – to clamp bulky workpieces.



Suitable for	Description	Interface	ID
KSC3-K 125-300	SGA-4 180-62-22	W-38	0432493

Reversible smooth jaw

Design as movable jaw.
Ground steps, for precise OP20 machining.



Suitable for	Description	Interface	ID
KSC3-K 125-300	SGWB-S8-B 125-57-33		1518691

Reversible smooth jaw

Design as fixed jaw.
Ground steps, for precise OP20 machining.



Suitable for	Description	Interface	ID
KSC3-K 125-300	SGWB-S8-F 125-57-33		1518692

5-axis jaw

Design as movable jaw.
One side with smooth clamping surface and threads for mounting top jaws.



Suitable for	Description	Interface	ID
KSC3-K 125-300	SG5A-B 125-44.5-33		1374778
KSC3-K 125-300	SG5A-B 125-45.5-40	W-125-1	0432472

5-axis jaw

Design as fixed jaw.
One side with smooth clamping surface and threads for mounting top jaws.

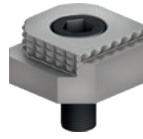


Suitable for	Description	Interface	ID
KSC3-K 125-300	SG5A-F 125-44.5-33		1374779
KSC3-K 125-300	SG5A-F 125-45.5-40	W-125-1	1551488

Top jaws

6-way reversible jaws grip

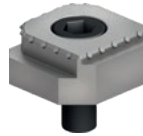
With five grip steps as well as a coated clamping face.



Description	Width mm	Height mm	Depth mm	Interface	ID
GBG-6W 38-38-18	38.5	18	38.2	W-38	0430803

6-way reversible jaw carbide grip

With five carbide grip steps as well as a smooth clamping face.



Description	Width mm	Height mm	Depth mm	Interface	ID
GBCG-6W 38-38-18	38.5	18	38.2	W-38	1395550

Jaw profiled

For increasing the friction between jaw and workpiece without clamping impressions.



Description	Width mm	Height mm	Depth mm	Interface	ID
GBD 125-40-11.5	125	40	11.5	W-125-1	1373349

Serrated jaw

For increasing the friction between jaw and workpiece with minimal clamping impressions.



Description	Width mm	Height mm	Depth mm	Interface	ID
GBC 125-40-12.5	125	40	12.5	W-125-1	1373268

Ground jaw

With a completely ground clamping face.



Description	Width mm	Height mm	Depth mm	Interface	ID
GBP 125-40-11.5	125	40	11.5	W-125-1	1373278

Soft jaw

Hardenable jaws for rework at the customer site, e.g. for incorporating contours or special shapes.



Description	Width mm	Height mm	Depth mm	Interface	ID
GBW 125-40-20	125	40	20	W-125-1	1373288

Stepped jaw

With ground step, 8 mm.



Description	Width mm	Height mm	Depth mm	Interface	ID
GBS 125-40-11.5-8	125	40	11.5	W-125-1	1373327

Stepped jaw

With ground step, 17 mm.



Description	Width mm	Height mm	Depth mm	Interface	ID
GBS 125-40-11.5-17	125	40	11.5	W-125-1	0430413

Stepped jaw

With coated step, 5 mm.



Description	Width mm	Height mm	Depth mm	Interface	ID
GBS-W 125-40-11.5-5	125	40	11.5	W-125-1	0430414

Stepped jaw

With grip step 3 mm and ground step 18 mm.



Description	Width mm	Height mm	Depth mm	Interface	ID
GBS-G3					
125-40-21.5-18	125	40	21.5	W-125-1	0430415
GBS-G3 125-40-24-18	125	40	24	W-125-1	1322989

Stepped jaw

With special "soft" grip step, 5 mm. For embossed clamping of soft materials such as plastic or aluminum.



Description	Width mm	Height mm	Depth mm	Interface	ID
GBS-SG5 125-40-11.5	125	40	11.5	W-125-1	1393552

Stepped jaw

With grip step, 3 mm. For embossed clamping of unhardened materials up to 22 HRC.



Description	Width mm	Height mm	Depth mm	Interface	ID
GBS-G3 125-40-11.5	125	40	11.5	W-125-1	1373331

Stepped jaw

With grip step, 5 mm.
For embossed clamping of unhardened materials up to 22 HRC.



Description	Width mm	Height mm	Depth mm	Interface	ID
GBS-G5 125-40-11.5	125	40	11.5	W-125-1	1373334

Stepped jaw

With grip step, 8 mm.
For embossed clamping of unhardened materials up to 22 HRC.



Description	Width mm	Height mm	Depth mm	Interface	ID
GBS-G8 125-40-11.5	125	40	11.5	W-125-1	1373338

Stepped jaw

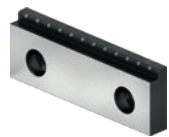
With carbide grip step, 3 mm.
For embossed clamping of hardened materials up to 58 HRC.



Description	Width mm	Height mm	Depth mm	Interface	ID
GBS-CG3 125-40-11.5	125	40	11.5	W-125-1	1395524

Stepped jaw

With carbide grip step, 5 mm.
For embossed clamping of hardened materials up to 58 HRC.



Description	Width mm	Height mm	Depth mm	Interface	ID
GBS-CG5 125-40-11.5	125	40	11.5	W-125-1	1424000

Stepped jaw

With special grip step, 3 mm.
For clamping pre-embossed materials and workpieces.



Description	Width mm	Height mm	Depth mm	Interface	ID
GBS-GL3 125-40-11.5	125	40	11.5	W-125-1	1395577

Stepped jaw with T-slot

With grip step, 3 mm.
T-slot for mounting the positioning strip.



Description	Width mm	Height mm	Depth mm	Interface	ID
GBS-G3-T 125-40-17.5	125	40	17.5	W-125-1	0430248

Stepped jaw with T-slot

With grip step, 5 mm.
T-slot for mounting the positioning strip.



Description	Width mm	Height mm	Depth mm	Interface	ID
GBS-G5-T 125-40-17.5	125	40	17.5	W-125-1	0430247

Stepped jaw with T-slot

With grip step, 8 mm.
T-slot for mounting the positioning strip.



Description	Width mm	Height mm	Depth mm	Interface	ID
GBS-G8-T 125-40-17.5	125	40	17.5	W-125-1	0430237

Positioning bar

To suit all stepped jaws with T-slot.



Description	Width mm	Height mm	Depth mm	Interface	ID
GPL 125-32-13.5	125	32	13.5	W-125-1	0430238

Grip jaw

For embossed clamping of unhardened materials up to 22 HRC.



Description	Width mm	Height mm	Depth mm	Interface	ID
GBG 125-40-11.5	125	40	11.5	W-125-1	1373284

Chuck jaw with locating pins

Retractable locating pins for quickly adjusting the jaw to the respective workpiece.



Description	Width mm	Height mm	Depth mm	Interface	ID
GPS 125-40-17	125	40	16.7	W-125-1	1509316

Prism jaw, ground

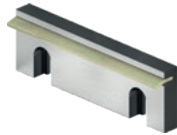
For precise clamping of round workpieces.
100 = Ø11 - Ø41 mm.
125 = Ø14 - Ø48 mm.
160 = Ø16 - Ø60 mm.



Description	Width mm	Height mm	Depth mm	Interface	ID
GVA 125-40-17.5	125	40	17.5	W-125-1	1373344

Spring leaf pull-down jaw

For an active jaw pull-down function with a light clamping impression on the workpiece for more precise machining results.



Description	Width mm	Height mm	Depth mm	Interface	ID
GFA 125-40-11.5	125	40	11.5	W-125-1	1373304

Spring plate pull-down jaw

For an active jaw pull-down function without clamping impressions on the workpiece for more precise machining results.



Description	Width mm	Height mm	Depth mm	Interface	ID
GFB 125-39-10	125	39	10	W-125-1	0430192

Precision pull-down jaw

For an active jaw pull-down function without clamping impressions on the workpiece for more precise machining results.



Description	Width mm	Height mm	Depth mm	Interface	ID
GBN-P 125-40-25	125	40	25	W-125-1	0430147

Accessories

Clamping force tester

For measuring the jaw clamping force of stationary clamping devices.



Suitable for	Description	ID
KSC3-K 125-300	IFT SST Set	1475766

Clamping pin GFD-SP mini

Clamping pin for form-fit connection of GFD mini set-up systems with clamping devices from SCHUNK.
1 set = 4 pieces.



Suitable for	Description	ID
KSC3-K 125-300	GFD-SP mini Ø20-h6	1602023

Standard clamping pins

Clamping pin for positive connection with NSE3 clamping modules.
With shortened fastening screw.



Suitable for	Description	ID
KSC3-K 125-300	SPA 40-K	0432369
KSC3-K 125-300	SPB 40-K	0432370

Clamping pin GFD-SP

Clamping pin for positive connection with GFD set-up stations.



Suitable for	Description	ID
KSC3-K 125-300	GFD-SP 40	0433600

Torque wrench 10 – 100 Nm

Serves for applying a defined torque.
With 1/2" square drive



Suitable for	Description	ID
KSC3-K 125-300	GSH-D 10-100	0432477

Actuating lever, articulated

For convenient clamping range presetting
With 1/2" square drive



Suitable for	Description	ID
KSC3-K 125-300	GSH-G 1/2"	0432478

Hexagonal insert SW 12

Suitable for square drive 1/2".



Suitable for	Description	ID
KSC3-K 125-300	GSK-I SW12-1/2"	0432479

Sealing plug

For thread in the base body.



Suitable for	Description	ID
KSC3-K 125-300	GVSS M10x12	1323002

Workpiece stop

Workpiece stop with minimum space requirements and continuously adjustable stop slide.
Including stop slider 40 and 80 mm.



Suitable for	Description	ID
KSC3-K 125-300	GWSA M8-23	1645258

Magnetic workpiece stop, small

For quick and easy attachment to system jaws or vises.



Suitable for	Description	ID
KSC3-K 125-300	GWSA-M 60 x 15	1391293

Magnetic workpiece stop, large

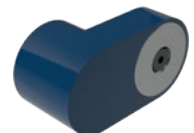
For quick and easy attachment to system jaws or vises.



Suitable for	Description	ID
KSC3-K 125-300	GWSA-M 115 x 15	1391331

Extensions

As an accessory for the magnetic workpiece stops.



Suitable for	Description	ID
KSC3-K 125-300	GWSA-V Ø68 x 30	1394477

Clamping screws for clamping claws

Used in combination with clamping claws for fastening clamping devices.



Suitable for	Description	T-slot	ID
KSC3-K 125-300	GSC-S M10-T12	12 mm/M10	0432043
KSC3-K 125-300	GSC-S M12-T14	14 mm/M12	0432044
KSC3-K 125-300	GSC-S M14-T16	16 mm/M14	0432045
KSC3-K 125-300	GSC-S M16-T18	18 mm/M16	0432046
KSC3-K 125-300	GSC-S M16-T20	20 mm/M16	1550423
KSC3-K 125-300	GSC-S M16-T22	22 mm/M16	1550424

Clamping screws for base body

Used for directly attaching clamping devices via the base body.



Suitable for	Description	T-slot	ID
KSC3-K 125-300	GSC-G-1 M10-T12	12 mm/M10	0430422
KSC3-K 125-300	GSC-G-1 M12-T14	14 mm/M12	0430423
KSC3-K 125-300	GSC-G-1 M12-T16	16 mm/M12	0430424
KSC3-K 125-300	GSC-G-1 M12-T18	18 mm/M12	0430425

Fitting screws

For precise position orientation and mounting of manual clamping vises on the machine table.



Suitable for	Description	ID
KSC3-K 125-300	GPSC-2 Ø12f7-M12	0490546

Workpiece Supports Set

Set of workpiece supports – width 125 mm

Suitable for system jaws H = 33 mm with grip level 3 mm. Heights = 8, 12, 20, 25, and 27 mm.



Suitable for	Description	ID
KSC3-K 125-300	GWU-S grip 125-33	1394227

Alignment and centering set

For quick and easy alignment and fastening on T-slot tables.



Suitable for	Description	T-slot	ID
KSC3-K 125-300	GAZ-3 T12	12 mm	0430418
KSC3-K 125-300	GAZ-3 T14	14 mm	0430419
KSC3-K 125-300	GAZ-3 T16	16 mm	0430420
KSC3-K 125-300	GAZ-3 T18	18 mm	0430421

Cylinder pin set

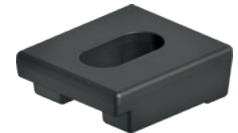
For easier assembly of the clamping device on the machine table.



Suitable for	Description	ID
KSC3-K 125-300	GZS Ø12m6	1373755

Clamping claws

For quick and easy mounting of SCHUNK clamping devices.



Suitable for	Description	ID
KSC3-K 125-300	GSPR-A 50-57	0490604

Cover screw

Used to cover unused clamping insert mounting holes on pendulum and adapter plates.



Suitable for	Description	ID
KSC3-K 125-300	GCS Ø22-M12	1307880

Workpiece supports

Workpiece supports – width 125 mm

In different heights.

1 Set = 2 pieces



Suitable for	Description	Height mm	ID
KSC3-K 125-300	GWU-M 125-8	8	1450266
KSC3-K 125-300	GWU-M 125-9	9	1462567
KSC3-K 125-300	GWU-M 125-10	10	1411328
KSC3-K 125-300	GWU-M 125-12	12	1447369
KSC3-K 125-300	GWU-M 125-15	15	1411350
KSC3-K 125-300	GWU-M 125-20	20	1452308
KSC3-K 125-300	GWU-M 125-22	22	1457551
KSC3-K 125-300	GWU-M 125-23	23	1411380
KSC3-K 125-300	GWU-M 125-25	25	1484475
KSC3-K 125-300	GWU-M 125-27	27	1461008



**H.-D. SCHUNK GmbH & Co.
Spanntechnik KG**

Lothringer Str. 23
D-88512 Mengen
Tel. +49-7572-7614-1300
Fax +49-7572-7614-1039
CMM@de.schunk.com
schunk.com